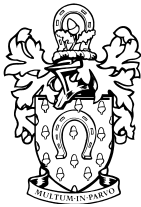


Public Document Pack



Rutland County Council

Catmose Oakham Rutland LE15 6HP

Telephone 01572 722577 Email: governance@rutland.gov.uk

Minutes of the **MEETING of the PARISH COUNCIL FORUM** held via Zoom on Monday, 28th June, 2021 at 7.00 pm

PRESENT:	Mr J Dale	Chairman Parish Council Forum
	Mr O Hemsley	Leader of RCC
	Mr M Andrews	Chief Executive RCC
	Mr P Horsfield	Monitoring Officer, RCC
	Mr J Morley	Director Adult Services, RCC
	Mrs P Sharp	Director for Places, RCC
	Mr M Waik	Strategic Communications Advisor, RCC

PARISH REPS: Parish/TownCouncil/Meeting

Barrowden	Richard Littlejohns
Clipsham	Clifford Bacon
Cottesmore	John Meara
Edith Weston	Helen Wood
Empingham	Neil Newton
Essendine	Tevor Burfield
Glaston	Paul Collis
Hambleton	Jeremy Orme
Langham	Jennifer Maskell
Manton	Richard Camp
Normanton	Christopher Renner
Seaton	David Coop
South Luffenham	Jan Bradley
Stoke Dry	Mark Morris
Thorpe by Water	Anthony Redmayne
Uppingham	Peter Leppard
Whitwell	Sally Mullins

1 **WELCOME AND INTRODUCTION BY THE CHAIRMAN OF THE COUNCIL**

Councillor Dale, Chairman of the Council, welcomed everyone to the meeting, and apologised for the inconvenience caused by IT issues and the transfer to the Teams platform rather than Zoom.

2 **APOLOGIES FOR ABSENCE**

Apologies were received from:

- Cllr Walters, RCC
- William Cross, Leighfield Parish Meeting
- Fiona Buchanan, Lyddington Parish Council

- Caroline Adams, Ryhall Parish Council
- Tom Murie, Tixover Parish Council

3 NOTES OF THE LAST MEETING

The minutes of the previous meeting that took place on 19th April, 2021 were confirmed as an accurate record.

4 MATTERS ARISING FROM THE LAST MEETING

There were no matters arising from the previous meeting held on 19th April, 2021.

5 MAIN DISCUSSION ITEMS

A) REVIEW OF THE STRUCTURE AND FORMAT OF PARISH COUNCIL FORUMS

Phil Horsfield provided a presentation based on the results of the recent Parish Survey. A copy of the presentation is attached to these minutes.

Mark Andrews then encouraged discussion to get a balanced perspective from those present. There was interest in smaller groups meeting alongside a less frequent forum.

Previously the forum met less frequently with RCC providing much input and meeting with a group of parish representatives, and fewer guest attendees. It was hoped that the revised structure would encourage participation, and even participation directly between parishes as well as just the larger forum, thus encouraging best practice.

It was agreed that there needed to be a balance between zoom/on-line forums and an in-person meetings. It was agreed that the discussion should be revisited the next time the forum is able to meet in person to better discuss the issues.

B) DISCUSSION AND UPDATE ON FUTURE RUTLAND

Mark Andrews introduced Mat Waik RCC's Strategic Communications Advisor who then provided a brief update on the Future Rutland Conversation (FRC). A copy of the presentation is attached to these minutes.

Discussion followed and the main points coming from that were:

- The FRC report could be of great use in informing the Local Plan, but this would be in addition to the already collated plan, and what has already been seen is that it is broadly supportive of the plan.
- Planning policy drafted the Local Plan and whilst there have been some issues, it will be for Council to ultimately make the decision on the Local Plan.
- The FRC will identify common ground that people want for the County and will require discussion/cooperation to find who can meet these aspirations, and how organisations (communities, Councils, CCG etc) can contribute towards delivery.
- The first stage will be to publish the vision which will be a document describing

the goals and aspirations county residents.

- RCC will produce corporate plan for next 5 years outlining what it will commit to, taking into account the vision requirements.
- RCC will expect partner organisations to provide similar plans/commitments.

6 UPDATE ITEMS

A) UPDATE ON THE HEALTH AND SOCIAL PLAN

Mark Andrews introduced John Morley, the Director of Adult Services and Health (DASS), who then provided a brief update on the Health and Social Plan.

Mr Morley explained that the Government has directed that an integrated care system be created by April 2022 when it will become statutory.

- It will give us control, authority and influence over our services, and our area will be divided into places within the county, Leicester City, Leicestershire County and Rutland County will each be places in their own right.
- Will cover how we collaborate our services (GPs, LA, Public Health and 3rd Sector).
- Services designed around population health management and targeted needs. Need to understand need for each place, different for each.
- Stop duplication, more efficient. Rutland already ahead on this, having an integrated hospital team with PCN and GPs.
- Governance: Health and Wellbeing Board has already been established (oversight of plan and sets vision), with Healthwatch Rutland representing the public, and professionals in the “Integrated Delivery Group” working on the plan.
- Timeline:
 - 9 September 2021 - detailed overview of plan to Adults Scrutiny
 - 5 October 2021 - draft plan to Health and Wellbeing Board
 - January/February 2022 - plan finalised
 - April 2022 - plan legal and operational
- Mark Andrews then emphasised that although there is a timeline above Rutland is trying to establish an earlier solution through a health and care plan. He urged people to get involved especially through the scrutiny process.
- Issues were noted for Rutland residents registered with GPs outside of the county boundaries which meant that care plans etc were not always easy to access from within the county when registered with a GP outside.
- It was reiterated that RCC is also liaising with CCGs across our border and trying to ensure that residents of Rutland can access care plans etc no matter

where their GP is located.

- Reorganisation of hospitals independent of ICS. CCG have yet to define plans for onward care but place based plan looks at how to best provide care within Rutland from available funding and resources to meet Rutland needs, and have services closer to home where possible.
- Group devising plan will be: Integrated Design Team comprising:

RCC	DASS Heads of Service (all social workers) Sandra Taylor (Better Care Fund Manager)
PCN	Fay Bayliss (Deputy Director overseeing place-based plans) John Singh (data) CCG Statistician Healthwatch Rutland representation 3 rd sector representation

Inputs given from Subgroups of individual professionals

PREVENT
Complex Care (living longer)
Business Intelligence (data collection)

B) UPDATE ON THE LEISURE NEEDS ASSESSMENT

Mark Andrews introduced Penny Sharp, the Strategic Director places to provide a brief update on the Leisure Needs Assessment.

- RCC are leading a recommissioning process looking at they should provide going forward. Looking at requirements across the county and how to provide.
- The currently contract with Stevenage Leisure was due to end, but due to Covid it was extended to enable more time to look at recommissioning. The extension goes through to March 2023 so need to have provision in place for that date.
- Reviewing facilities at Catmose college, which need significant capital investment. Pool closed due to health and safety issues.
- Changes of habits during pandemic and changes to the leisure market have impacted and all local authorities subsidising leisure.
- Looking at leisure within health and wellbeing agendas and utilising FRC to talk to residents about their habits and future needs.
- Stage one – understanding needs (not wants), looking at existing facilities etc.
- Stage two – identifying options to address needs and recommending a preferred option. To be considered in September this year.
- Stage three – define future leisure offer and identify what we need to commission

- Stage 4 – develop specification and delivery plan which may include recommissioning of services.

Key findings

- Strong network of facilities across county and with neighbours.
- Through FRC we see people participating in huge range of activities
- Key gap, lack of public access to swimming which needs addressing.
- Clear about role leisure provides in wider wellbeing agenda across the piste, including community facilities/public rights of way etc.
- Walking and cycling are main stay.
- Recognises opportunity to build on community activity.

Next stage to refine report that comes out of analysis and identify range of options in the early autumn so the council can move forward.

c) UPDATE ON THE LOCAL PLAN SITUATION INCLUDING ADVICE ON NEIGHBOURHOOD PLANNING

Mark Andrews provided a brief update on the Local Plan. As background he reminded the Forum that the Council had an approved local plan in 2019, but Council decided not to accept HIF grant which resulted in the St George's Barrack site being unviable. Local Plan was therefore paused. Subsequently MHCLG considered same grant to the MoD without RCC being involved in administration of the grant. Now need to take a decision to Council.

- Now need to advise planning inspector whether we wish to proceed on draft local plan or withdraw it so that they can plan accordingly.
- Govt in discussion with Homes England to contract directly with MoD to provide grants funding to the SGB Garden Development.
- Govt need assurance that the County still supports its draft local plan hence we need decision from Council.
- RCC need to be in position to plan financially and be able to look at budget for coming years.
- Officers will be recommending a course of action that they believe the council should take and the report will include all options available to the Council.

Discussion followed:

- There was discussion around the likely recommendation if the local plan was considered sound.

- Assurances required that Rutland wish to proceed with the current local plan.
- Planning officer's duty bound to provide their recommendation to Council, but they do not make the decisions.
- Mr Andrews explained that the correct way to ensure concerns were heard was to submit deputations and questions to Council. Deputations and representation to Ward members were also valid routes for challenges.
- With differences amongst members of the Council following the HIF rejection, there was concern about pressures on Councillors making the decision on the report, but the Monitoring officer and Chief Exec are there to support member ahead of that Council meeting, noting how emotive this topic was.
- Potential if plan withdrawn, that landowners may come forward with applications which may need to be considered.
- It was emphasised that report should identify all risks and issues so that councillors understand them. Specifically, the report should clearly explain what the option of rejecting the plan would entail. If the report does go to Examination in Public, the costs should be identified for both taking the plan forward or not. Mr Andrews assured the meeting that the report would cover risks of both taking the plan forward or not.

7 PARISH COUNCIL FORUM FORWARD PLAN

Potential items for the next or future meetings are noted below:

- Highways and Transport Working Group progress – Speeding
- Review of parking strategy
- Parish Councillor Turnover
- Provision for the Deceased – Request by Ryhall PC
- Update from the Scrutiny Commission Chair
- County Lines

8 ANY OTHER BUSINESS

There were no items of other business.

9 DATES OF FUTURE MEETINGS

The dates of the next meetings are as follows all commencing at 7pm:

Monday 6th September 2021
 Monday 4th October 2021
 Monday 1st November 2021
 Monday 6th December 2021
 Monday 10th January 2022
 Monday 7th February 2022
 Monday 7th March 2022

Please note that the meeting scheduled for 26 July 2021 is cancelled.

Potential agenda items for the Parish Council Forum should be emailed to governance@rutland.gov.uk.

---oOo---

The Chairman declared the meeting closed at 9.22 pm.

---oOo---

This page is intentionally left blank

Rutland County Council

Review of the Structure & format of the Parish Council Forum

Rutland Parish Forum

- The new format of the Parish Forum was designed to allow individual parish voices to be heard, and as a result strengthen the relationship between RCC and Parish Councils and between Parish Councils themselves. The intention was to also provide parishes an opportunity to input to wider issues.
- It was agreed by the Forum that the operation of these meetings would be reviewed after an initial period, and we subsequently sent out our survey to seek you views/feedback so that we could discuss in this meeting.
- **13 responses**

—
Question 1. Future meetings: How would you prefer future meetings to be conducted, in person, by zoom or a mixture of the two?

11

- 6 preferred a mixture of the two with the remainder split 3-4 between in-person/zoom

Question 2. The role of the Parish Forum:

a. Do you feel that the new format provides for a better relationship between parish councils?

- 10 agreed that the new format provides a better relationship between parish councils, with the remainder neither agreeing or disagreeing!

b. Secondly, do you feel that the new format will provide a better relationship between Parish Councils?

- 8 agreed that the new format will provide a better relationship between parish councils. Of the remainder only one disagreed and the other neither agreed or disagreed.

Question 3. Being Heard as a Parish Council – Membership/Forum structure:

a. Do you think that under the current arrangements for Parish Forums your individual Parish voice is being heard?

- 9 agreed that their parish voice was being heard, although 2 parishes disagreed, (one strongly) and another did not answer the question.

b. Secondly, what do you feel could help get your voice heard? For your Parish would you prefer:

- Mixed feelings, with 6 responses content with current arrangements. Of the remainder 3 favoured a mixture of smaller monthly gatherings with a bi-annual larger gatherings and one favoured just the smaller gatherings - 3 parishes did not respond.

—
Question 4. Agenda content: Do you agree that the agendas of the Parish Forum reflect the issues that are important to Parish Council's?

- 10 agreed that agendas reflect issues important to Parish councils, only one Parish disagreed with this and the remainder neither agreed or disagreed.

Question 5. Agenda Contribution: Do you feel that you are able to ensure that items that are important to your Parish are raised on the agenda for the forum?

- 8 agreed that parishes were able to ensure important issues for their parishes are raised with only one Parish disagreeing, and the remainder neither agreeing or disagreeing.

Question 6. Agenda setting: Do you agree with the revised composition of the agenda setting group (RCC members plus 3 elected from parishes)?

- 9 agreed with the revised structure of the agenda setting group, one disagreed and the others neither agreed or disagreed.

Discussion.....

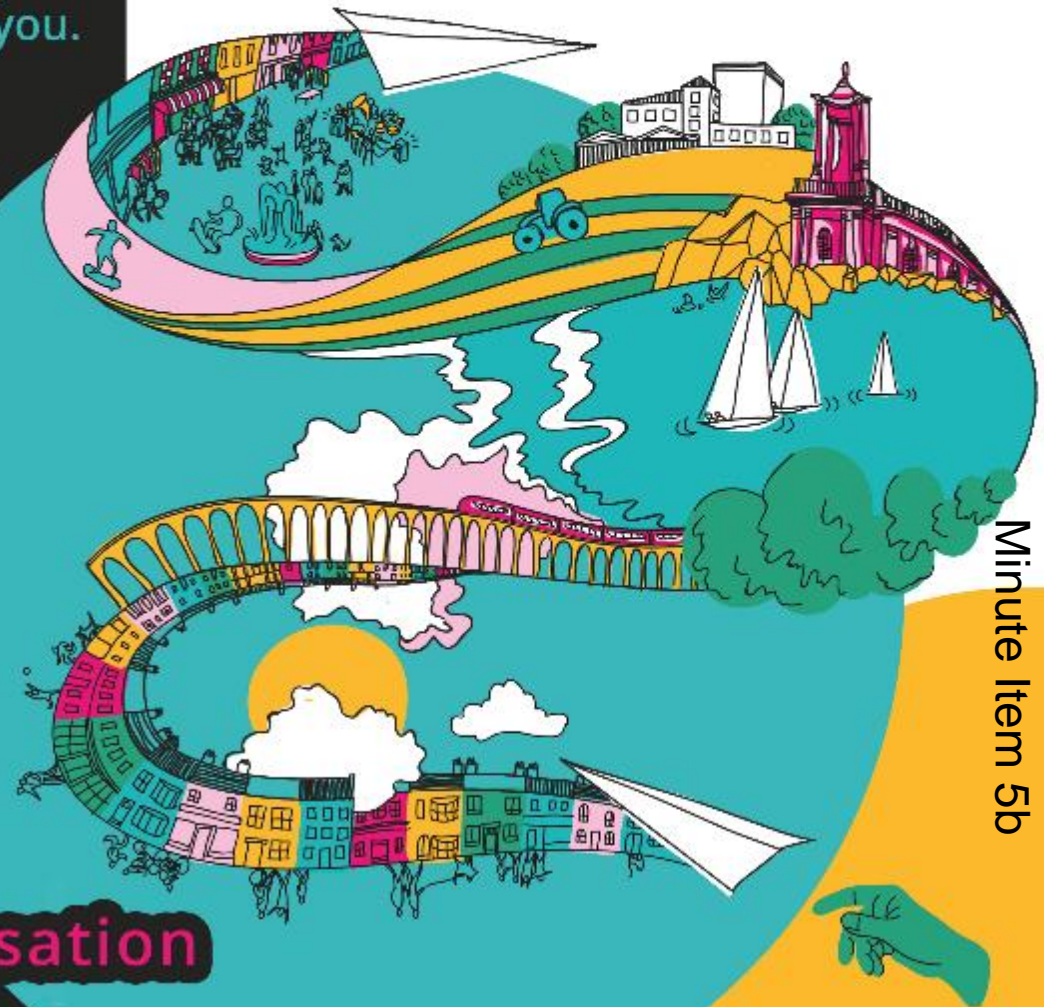
— Agenda setting committee:

When we sent your packs out we asked for nominations from Parishes for representatives to join the agenda setting committee.

18

I would be grateful if you could let us have them now – please put in the chat box and we will send out an email out requesting your votes so that we can elect the representatives by an on-line ballot.

Our County.
Our future.
For you,
by you.



19

The journey starts **here**.

#futurerutlandconversation

Minute Item 5b

Contents

- Background
- Response
- Process and next steps
- Developing the Vision
- Stage one summary reports
- Headlines
- What next?

20

[#futuresrutlandconversation](#)



Background

21

- **Aim of Future Rutland:** to develop a new shared vision for Rutland – a set of common goals and aspirations based on the things that matter to local people
- Eight weeks of discussion with adults, young people, businesses and visitors – what they value about life in Rutland and what they want from the future
- Extensive engagement across all channels – online surveys, direct mail, advertising, social media, in person (Zoom), telephone, through stakeholders
- **Purpose:** to gather enough feedback to develop a vision for the county which has legitimacy in the eyes of residents because it is firmly grounded in what people have told us is important to them, which can also be evidenced

[#futuresrutlandconversation](#)



Response

The Future Rutland Conversation ran from April to June 2021, during which time it generated the following response:

- A total of 2,022 people took part - 1,557 adults who registered online, plus 465 children and young people who were not required to give their details
- These participants provided more than 4,500 responses across multiple themed surveys
- More than 1,000 contributions were made across nine online forums
- Some 250 people took part in live discussion events via Zoom
- Submissions received from Rutland County Councillors, Parish Councils and local partner agencies

22

#futuresrutlandconversation



Process and next steps

- All feedback reviewed by an independent agency – Rutland Community Ventures – to provide impartial analysis
- Comments and data to be published at the end of June, together with a series of summary reports for each themed section – purpose being to invite further feedback
- Any further feedback gathered will be used to shape draft vision for Rutland, which will be published in August to invite even more discussion and feedback, keeping residents and stakeholders involved in each stage
- Cabinet to receive the Draft Vision in September. Presented to Full Council in October

23

[#futuresrutlandconversation](#)



Developing the Vision



Developing the Vision

Future Rutland surveys

1. Your life in Rutland
2. Climate and Environment
3. Learning, skills, employment
4. Health and wellbeing
5. Leisure and recreation
6. Getting around
7. Young people 0-10
8. Young people 11-16
9. Young people 16-18
10. Business owners
11. Visitors
12. Living in Rutland
13. Council services
14. Alumni
15. Keeping the conversation going

Summary reports

1. Life in Rutland
2. Climate and environment
3. Leisure and recreation
4. Getting around
5. Health and wellbeing
6. Skills, Learning, Employment
7. Young people
8. Business
9. Visitors
10. Council Services

The Vision?

A set of common goals and aspirations based on the things that matter to local people.

Not a council document but a declaration of the kind of place residents want Rutland to be.

Belongs to residents but needs the support of local organisations and agencies in order to deliver change in areas that fall within their remit.



Stage one summary reports

- 10 summary reports in total, supported by raw data, feedback from initial eight-week conversation and submissions from stakeholders
- Each summary report contains:
 - Background
 - Methodology and how to view full data
 - Demographics
 - Analysis of qualitative data
 - Analysis of quantitative data
 - How to provide further comment

26

[#futuresrutlandconversation](#)



Headlines

- 27
- Rutland is felt to offer a high quality of life and is a safe place to live
 - People believe that Rutland has a strong community spirit that comes from its size and the makeup of towns and villages – we have something special and unique here
 - Rural life and the environment are key to many people’s happiness and wellbeing
 - Mixed views and concerns about how Rutland should meet its obligations in relation to housing and development while also retaining its rurality and character
 - There is recognition that some change is needed in Rutland, particularly to meet the needs of young people
 - Young people care about many of the same things as adults (safety, close communities, wildlife/nature and the rural environment) but want more for themselves and their peers
 - The importance of good transport came through strongly throughout the conversation – access to healthcare, access to leisure, reducing our impact on the environment, giving young people freedom and independence
 - Large appetite for culture and leisure activities, both inside and outside the county
 - Access to healthcare is critical for many people – experiences vary depending on location

What next?

- Publication of data and summary reports this week
- Encourage people to review the information and provide further comment if they think anything has been missed
- Gather and review all this feedback to begin shaping a draft Vision

28

[#futuresrutlandconversation](#)





[#futurerutlandconversation](#)

This page is intentionally left blank